

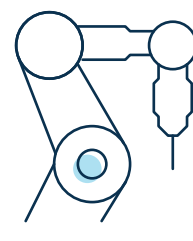


★ ★ ★ ★ ★ WHY HIGHER EDUCATION CHOOSES ARUBA

Flexible modes of instruction, increasing student and IoT devices, access to institutional resources, campus safety initiatives and securing personally identifiable information (PII) are driving digital transformation in higher education.



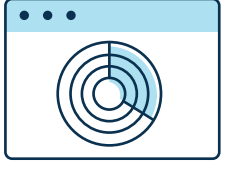
70%
of schools will fortify their cybersecurity and data encryption defenses¹



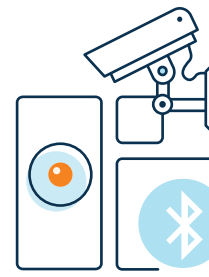
40%
of higher education institutions will leverage AI and robotic process automation (RPA) to automate campus tasks by 2025¹



THE NETWORK CAN HELP!



50%
of educational institutions plan to focus on building and campus safety by adopting technologies for capacity planning, contact tracing, and physical safety to manage COVID-19 and other hazards¹



49%
of education IT decision makers cited the use of IoT and location-aware solutions to improve campus safety²



Aruba's Customers Speak Out

FASTER & LESS EXPENSIVE

Ψ INDIANA UNIVERSITY

Increased user satisfaction by reducing authentication issues by 35% using ClearPass visibility tools and slashed Wi-Fi help desk calls 50% upon deployment.



DOANE UNIVERSITY

"We wouldn't want to put all of our APs in the cloud and manage them with one system, then have to troubleshoot our switches on another platform. Being able to manage everything from a single pane of glass using Aruba Central saves us valuable time and resources."

RYAN DORSHORST, Director of IT



The switches supplied advanced deployment capabilities immediately and will save up to \$600,000 over a five-year period on licensing, thanks to Aruba's campus switching 'no license required'.



UNIVERSITY OF CAMBRIDGE

IT services can generate its own income with no central funding by providing value-added network services and lowering the cost of operations and infrastructure.

BETTER PERFORMANCE & SERVICES

UC SANTA BARBARA

"Student residence hall experiences with Aruba's Wi-Fi gave us the confidence to deploy across campus. Our new wireless network provides exceptional experiences and is critical to continuing our distinction as a center of educational and research excellence on the global stage."

BEN PRICE, Associate CIO of Administrative and Residential IT

UNIVERSITY OF MINNESOTA

"Standardizing on a centrally managed Wi-Fi solution for the entire University system has significantly improved security controls and responses while enhancing performance, capacity, and stability for our ever-growing user base. We're addressing complex problems and delivering solutions that work."

LOUIS HAMMOND, Service Owner of Voice and Data Network Services



HOCHSCHULE HANNOVER UNIVERSITY OF APPLIED SCIENCES AND ARTS

"The Meridian based app enables users to navigate easily and safely around the campus. This benefits both students in their first semesters and visitors. Most importantly, we have created a solution that highlights easy access routes."

CARSTEN HELLMICH, Technical Project Manager

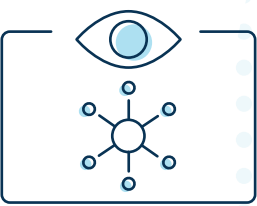


CHAPMAN UNIVERSITY

To enhance the BYOD onboarding experience, Chapman is using the built-in device registration portal within Aruba ClearPass so students can register their own devices. Students are using it every day and IT benefits by understanding what is connected, how many devices are being used and which devices belong to each student.

The Network Solution for Today's Higher Ed Challenges

Join other universities and community college districts around the globe who are using Aruba ESP (Edge Services Platform) to drive innovative learning and hybrid campus experiences. Empower your network to go beyond connect and protect, and support evolving campus demands!



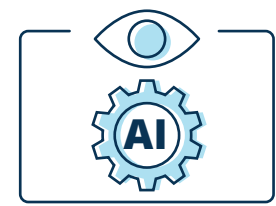
Aruba Unified Infrastructure

Unify administrative buildings, dorms, research facilities, arenas, data center, and home connectivity with converged management of wired, wireless, and WAN networks onto a single cloud-native platform.



Edge-to-Cloud Security

Deploy IoT and other technologies with zero trust confidence, ensuring your student data, instructor data, administrator data, and device traffic stay segmented.



Aruba AI Ops

Stay ahead of issues and student complaints by leveraging big data and machine learning. Automate IT operational processes such as troubleshooting, root cause determination, and network optimization efforts.

ESP Use Cases



Deploy devices across large campuses faster



Ensure always-on connected users and IoT devices



Enable seamless and remote connectivity for hybrid instruction



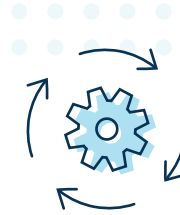
Improve experiences and operations with location insights and analytics



Simplify campus navigation using wayfinding within campus buildings and grounds



Optimize secure access to student records, resources, and data



Leverage automation, sensors, and robotics found in emerging technologies

Learn more about Aruba higher-ed solutions and how to get started

[FIND OUT MORE](#)