The background of the slide is a dark blue gradient. In the upper right corner, there is a whiteboard with a diagram drawn on it. The diagram consists of several interconnected nodes and lines, with some nodes highlighted in red. In the lower right corner, there is a faint, light-colored silhouette of a person's head and shoulders, facing right. The main title is written in large, bold, white, sans-serif font, centered on the left side of the slide.

An Experimental Web-based Collaboration and Semantic Knowledge Management Approach in Hospital Environment

Z & V Papeš, D. Bengez, P. Konjevoda,
Z. Rešetar, N. Gotovac, S. Večerina Volić,
T. Ibrahimpašić

or





**Wiki-wiki Why,
Why Blog,
Why Semantic Web,
Ontologies
and Semblog, and Why
Croatian Education Learn
Sloooooooooooooow**

Z & V Papeš, D. Bengez, P. Konjevoda,
Z. Rešetar, N. Gotovac, S. Večerina Volić,
T. Ibrahimpašić

HARD

RSA public key on ssh2 protocol,
HTTPS Web-based e-mail

Content recenzents

(management, other bodies,
experts, third party)

<http://www.kbsm.hr>

<http://moodle.kbsm.hr>



SOFT

**(read-write
Web**

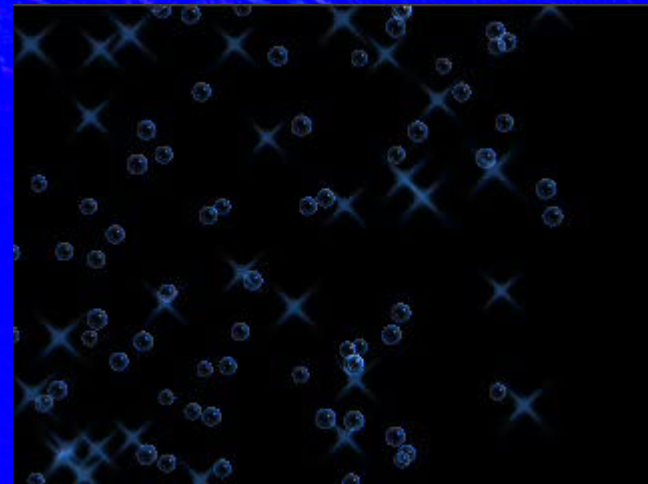
**collaboration
and management
tools)**

<http://wiki.kbsm.hr>

<http://wp.kbsm.hr>

<http://portal.kbsm.hr>


<http://forum.kbsm.hr>



**Wiki-wiki Why,
Why Blog,
and Semblog
Forums,**

<http://hupnoz.blog.hr>

etc...



KBSM

Knowledge Based Semantic Management

Ontologies based association of data

DL, OWL



Every ontology is aspect, or domain, specific

There are no universal ontology

Mapping ontologies is matter of investigation

Most decisions in real lifes are



**What you
see here?**





**It was
letter E,
and here?**





Research

DISEASE research

DEPT/CENTERS

FACULTY

CLINICAL Trials

PUBLICATIONS

PHILANTHROPY

The Lexical Grid

Home

Standards

Tools

Content

Sources

LexGrid Index

Formats

LDAP Server

LDAP Resources

Content

Without content, all of our standards and tools have little use. For this reason, we also provide as much terminological content as we can. We have nearly a dozen terminologies currently available on this site. We do our best to keep the terminologies up to date, and complete. However, we also don't have the time to maintain all of them by ourselves. This is why the LexGrid model is built around distributed terminologies - if the authors of each terminology were responsible for keeping and publishing the LexGrid formatted version of their terminology, then it would be immediately available for everyone.

Since we haven't reached that goal yet, we currently use a lot of different tools to transform terminologies and ontologies from their native format into the LexGrid format. If you write any tools to transform other terminologies into the LexGrid format, please send them to us, so they can be shared. Also, we would welcome volunteers to take over the maintenance of individual terminologies. Please contact us if you would like to volunteer.

3.7.2. Related

```
skos:semanticRelation
|
+--skos:related
```

The `skos:related` property allows you to create associative links between concepts. Again, this property carries weak semantics - it expresses the fact that two concepts are in some way related, and that the relationship should NOT be used to create a hierarchy. Essentially, this property allows you to create links between branches of a hierarchy of concepts.

Example of using `skos:related`

```
<rdf:RDF
  xmlns:rdf="http://www.w3.org/1999/02/22-rdf-syntax-ns#"
  xmlns:skos="http://www.w3.org/2004/02/skos/core#"

  <skos:Concept rdf:about="http://example.com/Concept/0002">
    <skos:prefLabel>English cuisine</skos:prefLabel>
    <skos:altLabel>English dishes</skos:altLabel>
    <skos:altLabel>English food</skos:altLabel>
    <skos:inScheme rdf:resource="http://example.com/thesaurus"/>
    <skos:related rdf:resource="http://example.com/Concept/0003"/>
  </skos:Concept>

  <skos:Concept rdf:about="http://example.com/Concept/0003">
    <skos:prefLabel>English pubs, cafes and restaurants</skos:prefLabel>
    <skos:altLabel>English eateries</skos:altLabel>
    <skos:inScheme rdf:resource="http://example.com/thesaurus"/>
    <skos:related rdf:resource="http://example.com/Concept/0002"/>
  </skos:Concept>

</rdf:RDF>
```

The two examples above give a concept scheme with the following structure:

Diagram of concept structure

Datoteka Uređivanje Pogled Idi Bilješke Alati Prozor Pomoć

Nazad Naprijed Ponovno učitavanje Zaustavi <http://virtual.cvut.cz/cgi-bin/kifb/kifb.cgi?offset=8231256&speech=0&ptr=18&lang=en> Traži Ispis

Početna Bilješke Intro

scholar, scholarly person, student

a learned person (especially in the humanities); someone who by long study has gained mastery in one or more disciplines

SUMO term(s): kind of [hasSkill](#)

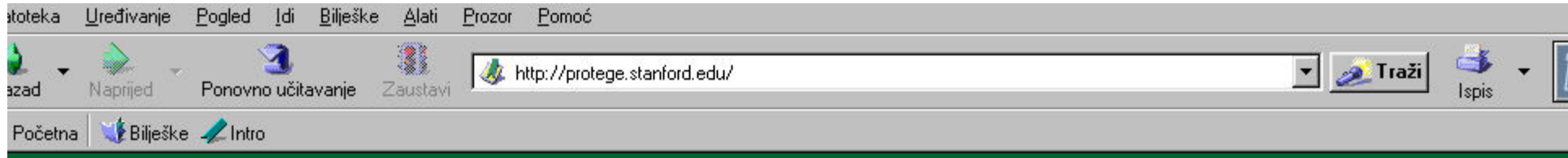


kinds of scholar (all) ...

- **scholar, scholarly person, student:** *a learned person (especially in the humanities); someone who by long study has gained mastery in one or more disciplines*
 - **academician, schoolman:** *a scholar who is skilled in academic disputation*
 - **alumnus, alumna, alum, graduate, grad:** *a person who has received a degree from a school (high school or college or university)*
 - **old boy:** *a male ex-pupil of a school*
 - **Arabist:** *a scholar who specializes in Arab languages and culture*
 - **bibliographer:** *someone trained in compiling bibliographies*
 - **classicist:** *a student of ancient Greek and Latin*
 - **Latinist:** *a specialist in the Latin language*
 - **doctor, Dr.:** *a person who holds Ph.D. degree from an academic institution; "she is a doctor of philosophy in physics"*
 - **historian, historiographer:** *a person who is an authority on history and who studies it and writes about it*
 - **annalist:** *a historian who writes annals*
 - **art historian:** *a historian of art*
 - **Panofsky, Erwin Panofsky:** 1892-1968
 - **chronicler:** *someone who writes chronicles*
 - **Herodotus:** *the ancient Greek known as the father of history; his accounts of the wars between the Greeks and Persians are the first known examples of historical writing (425-485 BC)*
 - **Parkinson, C Northcote Parkinson Cyril Northcote Parkinson:** *British historian noted for ridicule of bureaucracies (1900-)*

Start PRO... Solari... Rem... _Sol... kifb... zlatko Sibe... Upra... Kbsm...

12:



Protégé-2000



[What is it?](#)



[How do I get it?](#)



[How do I use it?](#)

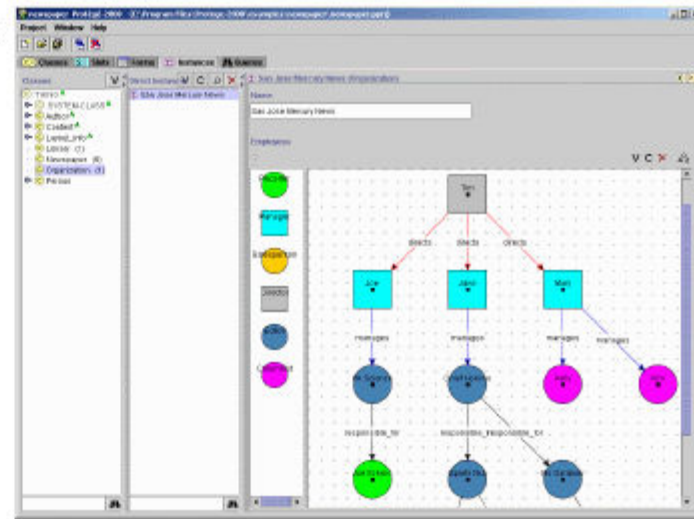


[How do I participate?](#)



[How do I extend it?](#)

7th International Protégé Conference July 6-9, 2004 Bethesda, Maryland



Protégé is an ontology editor and a knowledge-base editor.

Protégé is also an open-source, Java tool that provides an extensible architecture for the creation of customized knowledge-based applications.

Protégé's [OWL Plug-in](#) now provides support for editing Semantic Web ontologies.

[Release 2.1.2](#) August 4, 2004
[Beta 3.0](#) August 20, 2004

Protégé Community Statistics

Registered Users	20015
<i>users</i> list members	8837
<i>discussion</i> list members	2564
<i>discussion</i> list messages	10268
Plug-ins	85

Updated September 10, 2004

[Protégé Affiliates Program](#)

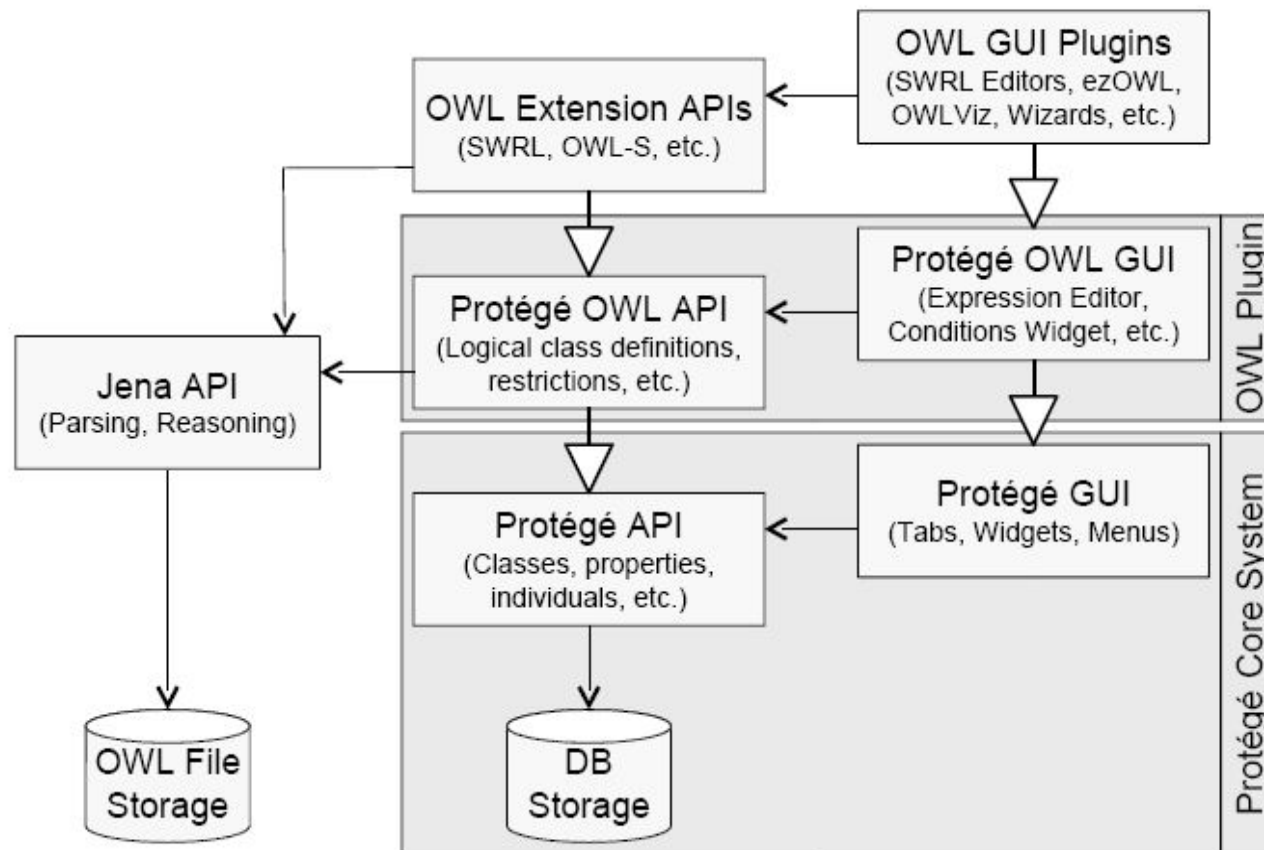
Protégé is a national resource for biomedical ontologies and knowledge bases supported by the [National Library of Medicine](#)

Copyright © 2003 Stanford Medical Informatics



Architecture

The OWL Plugin is an extension of the Protégé core system.



Details about this architecture can be found in the publication "[The Protégé OWL Plugin: An Open Development Environment for Semantic Web Applications](#)"

KBSM2 Protégé 2.1.1 (file:\G:\SemWeb\Ontologije\KBSM2.pprj, OWL Files)

Project Edit Window OWL Wizards Code Help Jambalaya

Classes Slots Forms Instances Queries Jambalaya Classes & Instances Knowledge Acquisition

Classes

- owl:Thing
- :SYSTEM-CLASS A
- rdfs:Class M (6)
- rdf:Property M (5)
- :DIRECTED-BINARY-RELATION M
- ExternalResource
- owl:Nothing
- rdf:List (1)
- rdfs:Literal
- rdfs:Container
- rdf:Statement
- owl:DataRange
- KBSM
 - Djelatnost M
 - Nastavna_djelatnost
 - Podrška
 - Rad_klinika_i_zavoda
 - Zdravstvena_djelatnost
 - Znanstveno-istraživačka_dje
 - Kadrovi M
 - Djelatnost M
 - Odgovorni_za A
 - virtualni_serveri M
 - Organizacija
 - Klinike_i_zavodi
 - Knjižnica
 - Mreže
 - Multimedijски_centar
 - Ravnateljstvo
 - Referentni_centri
 - Serveri
 - Sestrinstvo

Hierarchical View - KBSM2

Edit Node Navigate Arrange

Home Expand All Descendants

Display Mode:

Navigation Filtered Search Results

Hierarchy: DIRECT-SUB Labels: Above Node (fixed) Navigation: Magnify

Ontology Portal

[[Home](#) | [Browse](#) | [Download](#) | [Publications](#) | [Projects](#) | [Tools](#) | [What's New](#) | [About](#)]

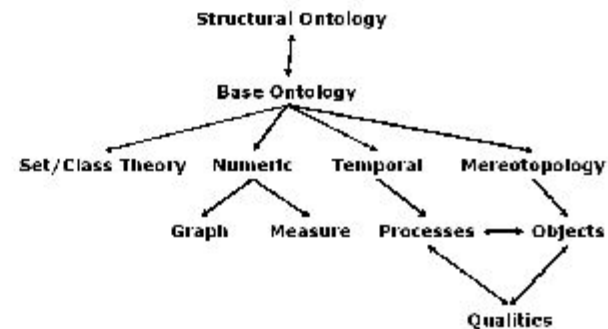
The Suggested Upper Merged Ontology (SUMO) and its domain ontologies form the largest formal public ontology in existence today. They are being used for research and applications in search, linguistics and reasoning. SUMO is the only formal ontology that has been mapped to all of the [WordNet](#) lexicon. SUMO is written in the [SUO-KIF](#) language. SUMO is free and owned by the IEEE. The ontologies that extend SUMO are available under [GNU General Public License](#). [Adam Pease](#) is the Technical Editor of SUMO.

Features

- [Mappings](#) to all of WordNet
- [Language generation templates](#) for Hindi, Chinese, Italian, German, Czech and English
- Tool support for browsing and editing
- Largest free, formal ontology available, with 20,000 terms and 60,000 axioms when all domain ontologies are combined. These consist of [SUMO](#) itself, the [Mid-Level Ontology \(MLO\)](#), and ontologies of [Communications](#), [Countries and Regions](#), [distributed computing](#), [Economy](#), [engineering components](#), [Geography](#), [Government](#), [Military](#), [North American Industrial Classification System](#), [People](#), [physical elements](#), [TransnationalIssues](#), [Transportation](#), [Viruses](#), [World Airports](#). Additional ontologies of terrorism and weapons of mass destruction are available on request.
- Richly axiomatized, not just a taxonomy. All terms are formally defined. Meanings are not dependent on a particular inference implementation. An inference and ontology management system however is [provided](#)

Find an English word and its corresponding formal term in SUMO:

English
 Word:





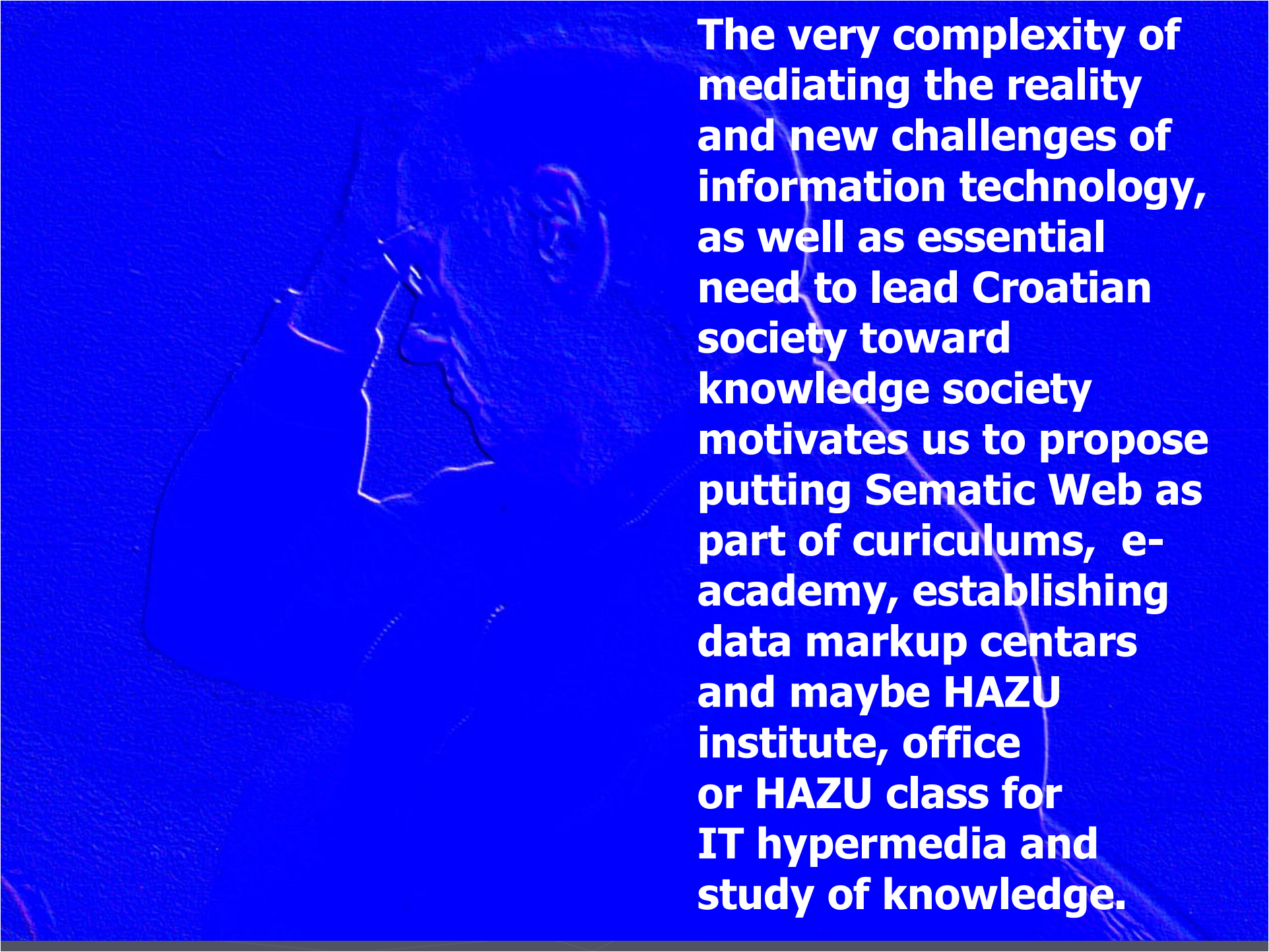
Are we enough careful?

“Our life is not based on syllogistic logic”

*Clay Shirky's Writing About the Internet
"The Semantic Web, Syllogism, and Worldview"
7.11.2003. Network, Economics and Culture mailing list
http://www.shirky.com/writings/semantic_syllogism.html*

What we else need for better collaboration?





The very complexity of mediating the reality and new challenges of information technology, as well as essential need to lead Croatian society toward knowledge society motivates us to propose putting Sematic Web as part of curriculums, e-academy, establishing data markup centars and maybe HAZU institute, office or HAZU class for IT hypermedia and study of knowledge.



Thanks for attention!

Questions?

Contact: zlatko@kbsm.hr