

# useworld.net

*An open user adaptive scientific internet  
portal for the human machine interaction  
community*

L. Urbas, S. Leuchter, M.C. Kindsmüller, R. Weyers

Center of Human-Machine Systems  
Technische Universität Berlin

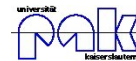


Technische Universität Berlin



# useworld.net

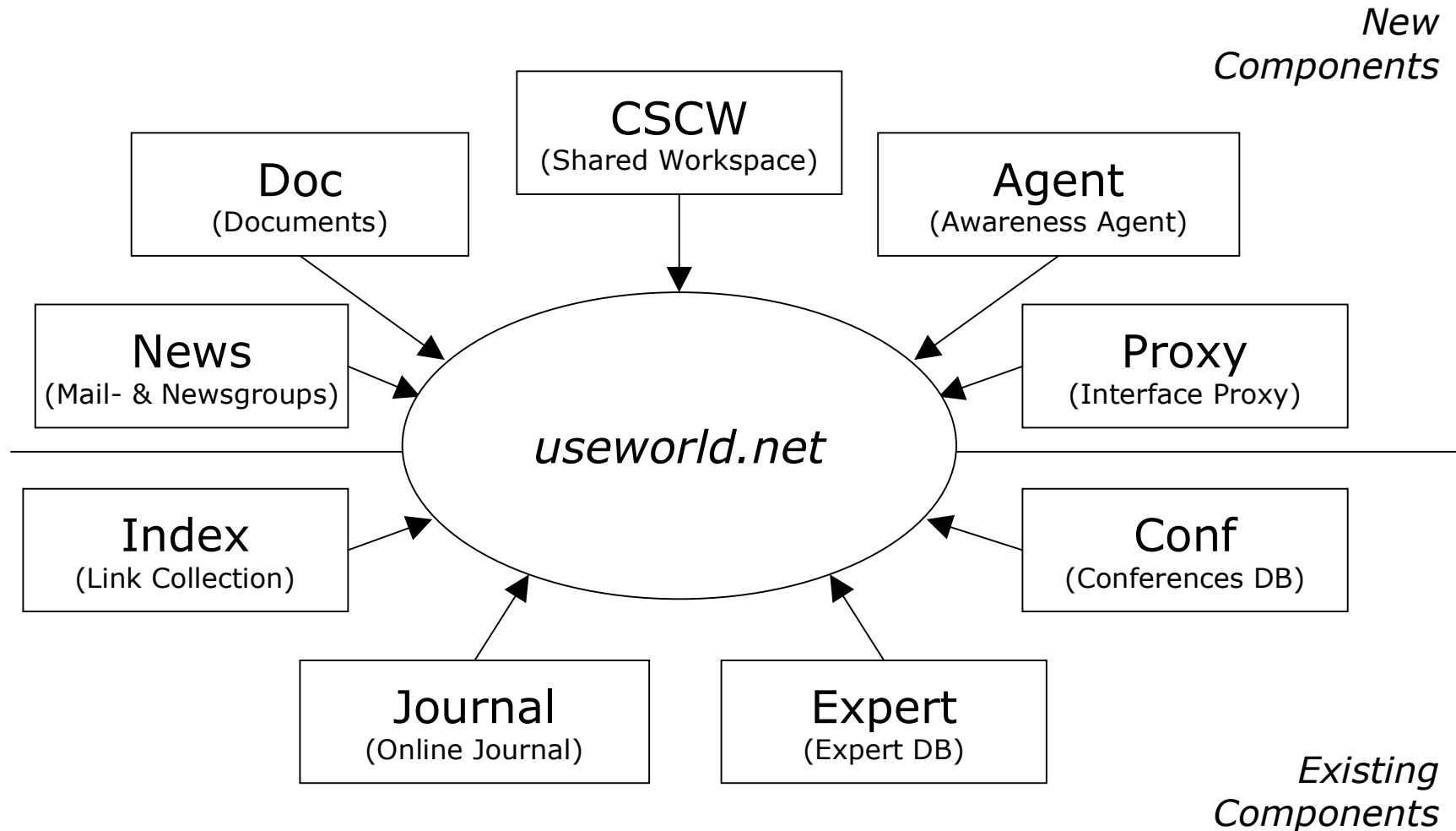
- Mission Statement
  - development and operation of a user adaptive scientific portal for the German-speaking human-machine-interaction research community
- Project Outline
  - sponsored by DFN (BMBF)
  - ca. 0,5 mio €, 2 ½ years time
  - cooperation between Aachen, Berlin, Essen, Kaiserslautern, & Zürich



# Challenges

- Design
  - heterogeneous user group
  - only partially known requirements
  - user adaptation
- Technology
  - integrated information & cooperation services
  - Re-use, extendability,
- Operation
  - activate and enable users to become content providers

# Component Model



# Software Design Objectives

- User Activity
  - users are editors
  - role concept
  - agent support for awareness tasks
- Content Quality
  - rating
  - role concept
- Adaptivity
  - information selection & presentation
  - based on interaction, rating, cooperation
- Personal Data Privacy
  - software design
  - role concept

Hauptkatalog - Microsoft Internet Explorer

Datei Bearbeiten Ansicht Favoriten Extras ?

Zurück Vorwärts Abbrechen Aktualisieren Startseite Suchen Favoriten Verlauf E-Mail Drucken Bearbeiten Diskussion

Adresse http://www.useworld.net/servlet/maincat Wechselt zu

USEWORLD log-out Lounge rote Fäden Archiv Katalog CSCW Agent Suche Hilfe

leon@UseWorld Speicher

**Katalog**

**Forschungseinrichtungen**

**Forschungsgegenstände**  
 Automatisierung, Entwicklungsprozesse, Grundlagenforschung, ...

**Konferenzen**  
 Arbeitswissenschaftliche Konferenzen,  
 Experimentalpsychologische Konferenzen,  
 Geisteswissenschaftliche Konferenzen, ...

**Methoden**  
 Arbeitsanalytische Methoden, Blickbewegung, Erhebungs- &  
 Experimentatechniken, ...

**Personen**

**Forschungsgebiete**  
 Ausbildung/Training, Ergonomie, Evaluation, ...

**Forschungsobjekte/ -domänen**  
 Assistenzsysteme, Kommunikation, Mensch-Maschine-  
 Schnittstelle, ...

**MMI-interaktiv Journal**

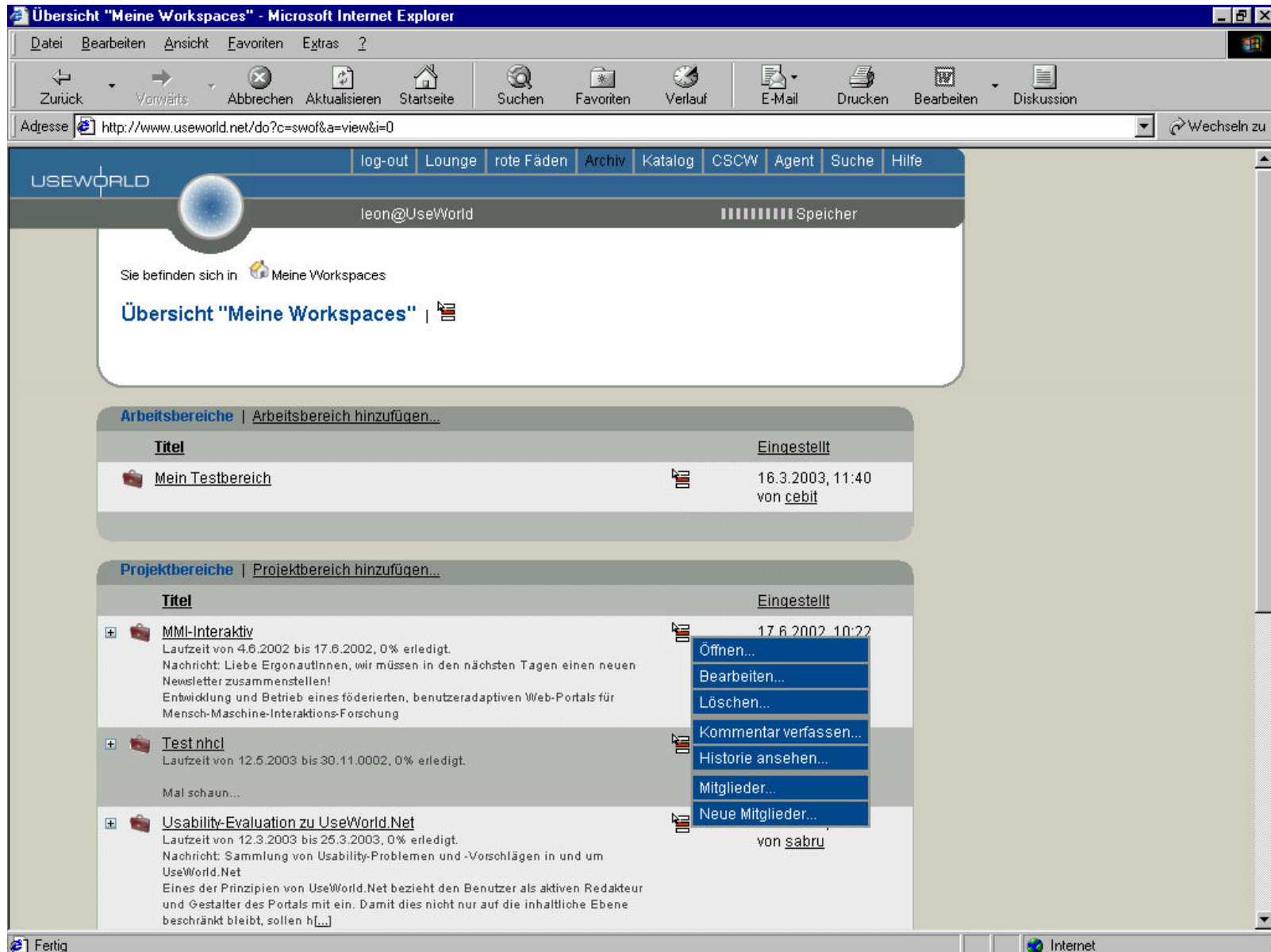
**Organisationen**  
 Arbeitswissenschaftliche Organisationen, HCI Organisationen,  
 Psychologische Organisationen

**Test&Spieldaten**  
 Essen & Trinken, ModBib, Startseiten Berliner Unis, ...

Impressum | Info | Fehler melden | webmaster@useworld.net

Fertig Internet







# Socialware

= *software that supports social activities:*

- linking people (search & find people)
- smooth communication
  - context oriented
  - group building
- integration of services (search & find information)

# Socialware in useworld.net

Profiles



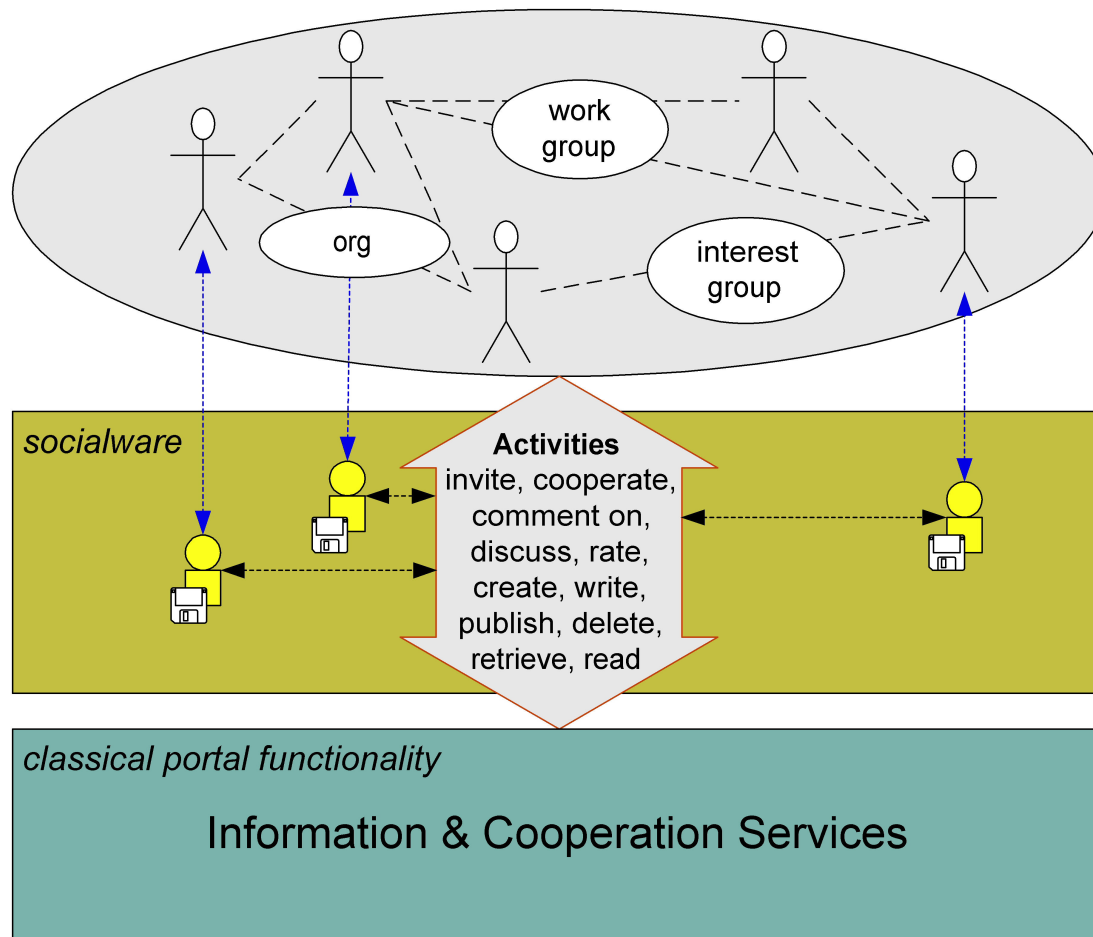
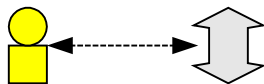
Agents



Reduction

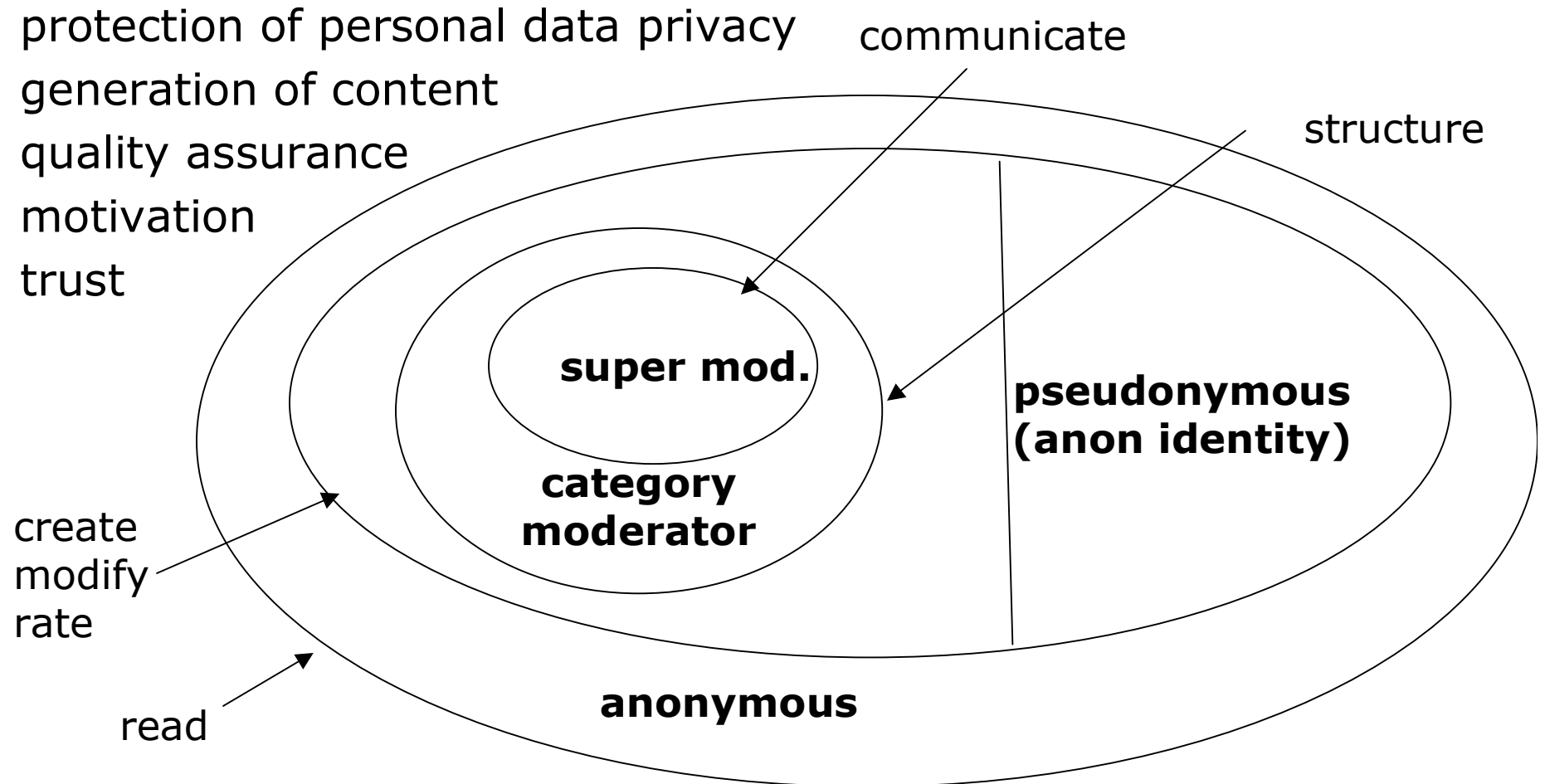


Awareness



# Roles in useworld.net

- protection of personal data privacy
- generation of content
- quality assurance
- motivation
- trust



# useworld.net is online

- Current State
  - online since March 2003
  - positive user feedback
  - community slowly growing
- Next Steps
  - promotion & acquisition
  - transfer of technology

# Thank you for your attention

- ZMMS (TU Berlin)
  - S. Leuchter, M.C. Kindsmüller, R. Weyers, R. Zhao, T. Spiridonidou, L. Urbas, K.-P. Timpe
- iaw (RWTH Aachen)
  - A. Künzer, L. Schmidt, H. Luczak
- pak (Universität Kaiserslautern)
  - K. Röse, J.-P. Gewehr, D. Zühlke
- EiD (Universität Essen)
  - P. Gersch, Ch. Noss, Ch. Eggert, R. Bruder

**[www.useworld.net](http://www.useworld.net)**  
**[www.zmms.tu-berlin.de](http://www.zmms.tu-berlin.de)**