

# Poznan Supercomputing and Networking Center

TERENA Networking Conference, 2003

---



## **MOBILE WORK ENVIRONMENT FOR GRID USERS. TESTBED**

Mirosław Kupczyk [miron@man.poznan.pl](mailto:miron@man.poznan.pl)

Rafał Lichwala

Norbert Meyer

Bartek Palak

Marcin Plocienik

Paweł Wolniewicz

# Poznan Supercomputing and Networking Center

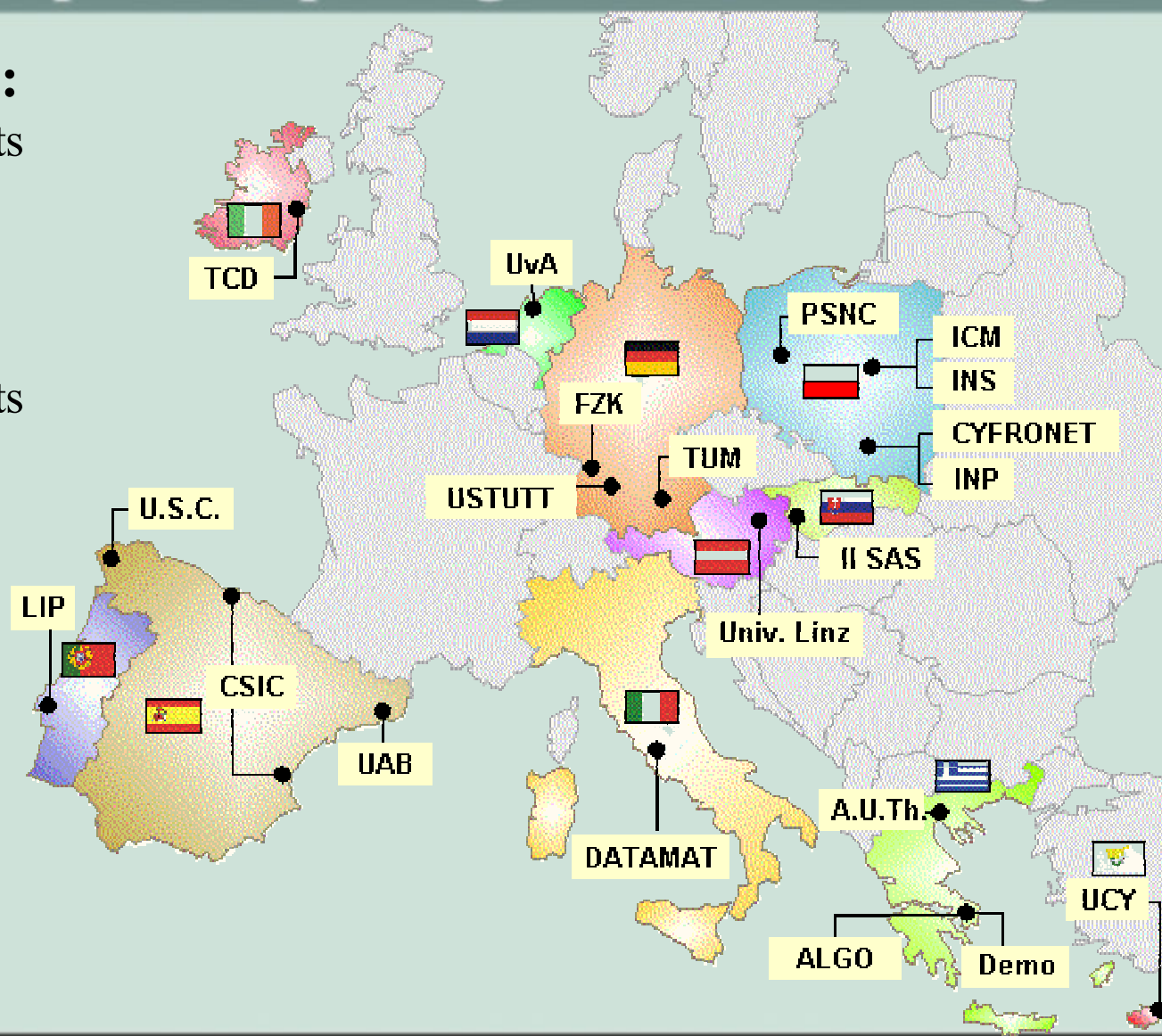
## CrossGrid:

21 participants

11 countries

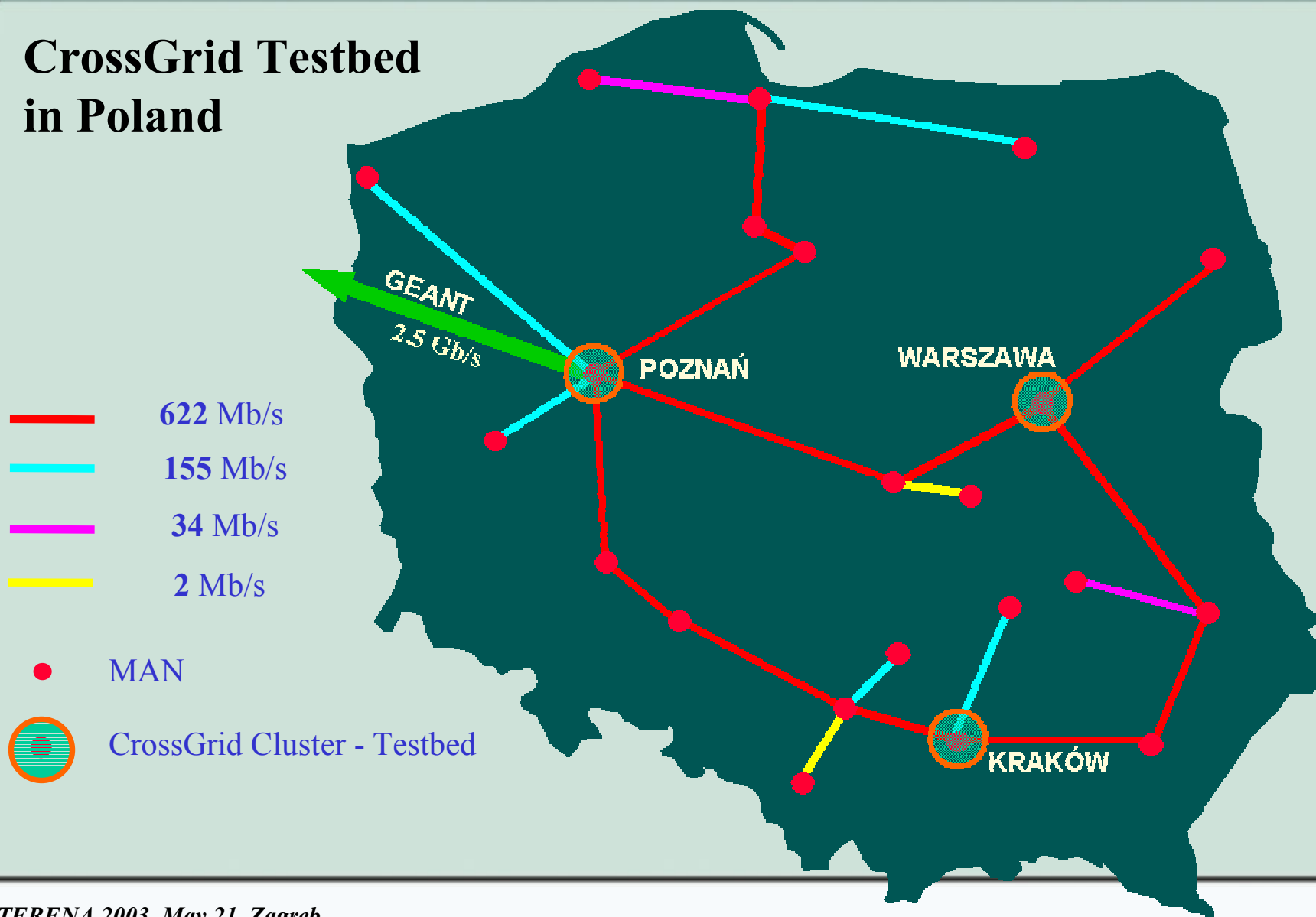
## Testbed:

16 participants



# Poznan Supercomputing and Networking Center

## CrossGrid Testbed in Poland



TERENA 2003, May 21, Zagreb

# Poznan Supercomputing and Networking Center

## CrossGrid testbed resources

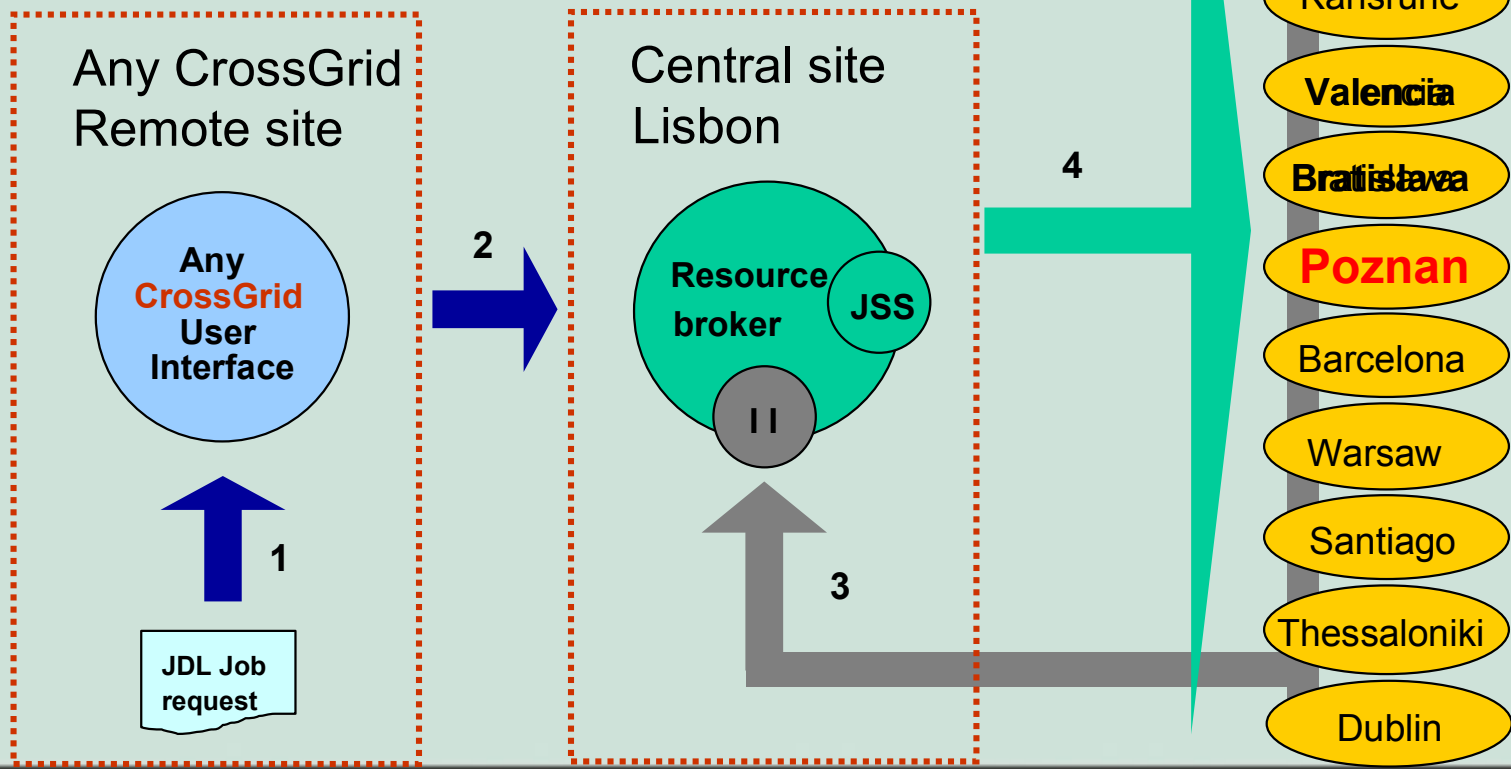
Production testbed		Validation testbed	
Computing Elements	15	Computing Elements	3
Worker nodes	69	Worker nodes	4
CPUs	115	CPUs	5
Storage elements	14	Storage Elements	3
Storage capacity	2.7TB	Storage capacity	1.2TB

Interfaces: Fast Ethernet  
Gigabit Ethernet

# Poznan Supercomputing and Networking Center

## Production Resource Broker

1. Job requests are submitted from remote UIs
2. Jobs are sent to the RB located at LIP
3. The RB uses site information in the matchmaking
4. The RB submits the job to a CE using GRAM

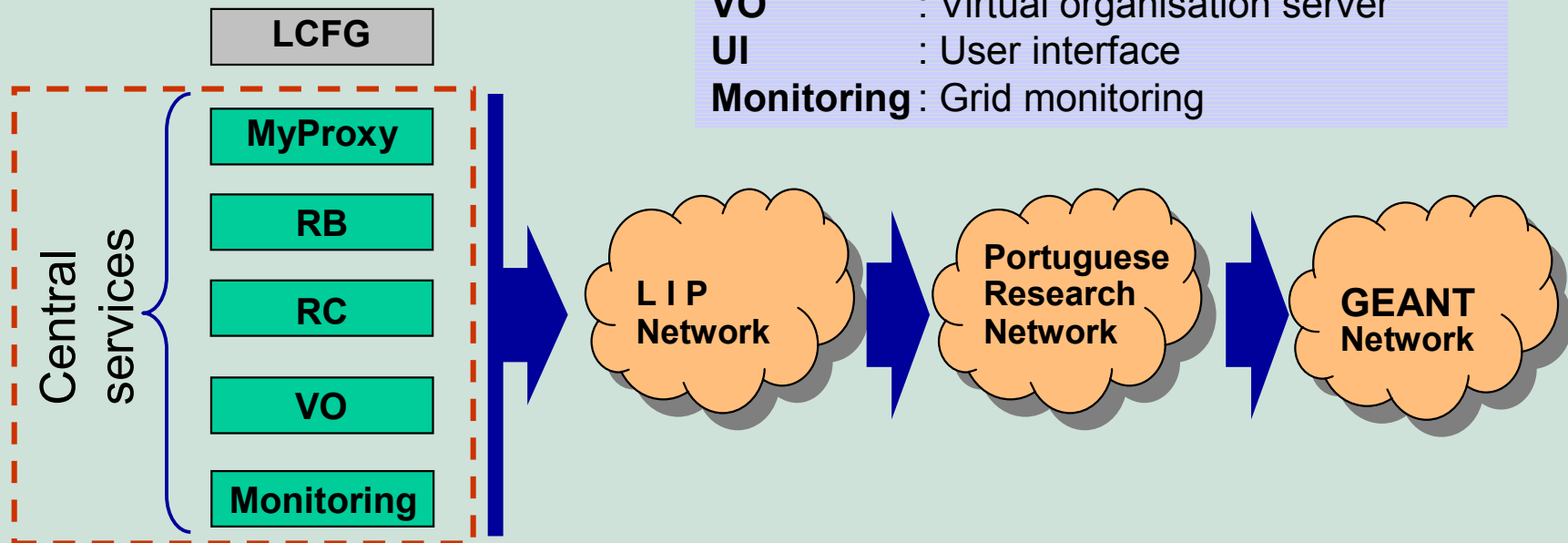


# Poznan Supercomputing and Networking Center

## Production services

The CrossGrid production central services are located in Lisbon

**MyProxy** : Certification proxy  
**RB** : Resource broker  
**RC** : Replica catalogue  
**VO** : Virtual organisation server  
**UI** : User interface  
**Monitoring** : Grid monitoring



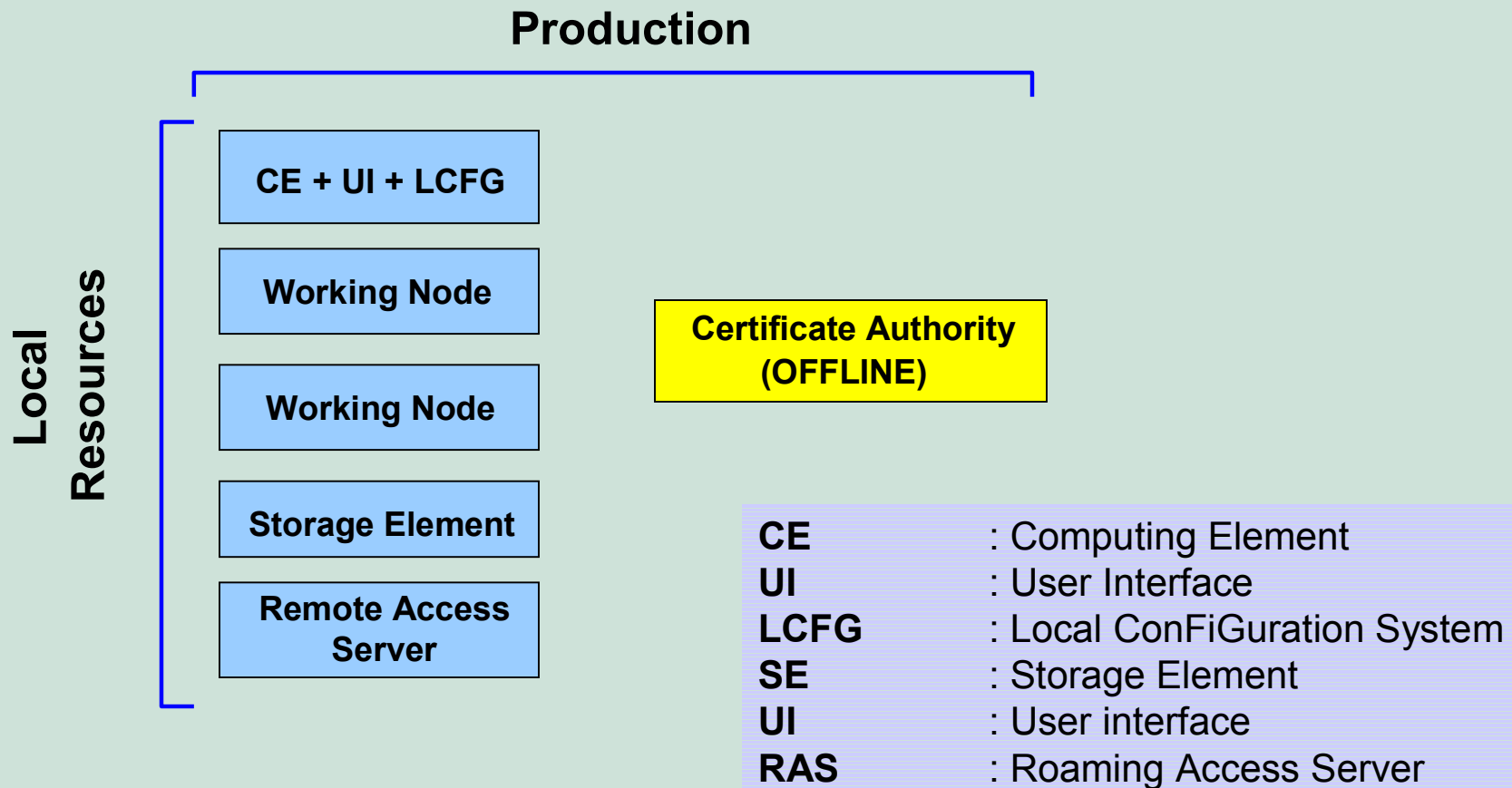
# Poznan Supercomputing and Networking Center

## Available services

- **Resource Broker**
  - Matchmaking and load balancing scheduler.
  - Performs load sharing across CrossGrid sites.
- **Certificate Proxy server**
  - Short lived certificates for long lived processes.
  - Used by the applications portal and by the RB.
- **Virtual Organizations server**
  - Database for user authentication.
  - Is used to build the authorization databases of all CrossGrid sites.
- **Replica Catalogue**
  - Database for physical replica file location.
  - Central service to find the location of files in SEs.
- **Network and Grid Monitoring**
  - Early detection of problems in the CrossGrid testbed.

# Poznan Supercomputing and Networking Center

## Production systems hosted at PSNC

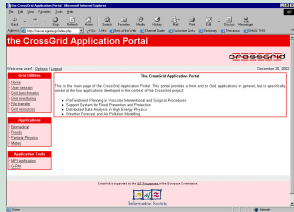




# Poznan Supercomputing and Networking Center



## Portals and Roaming Access

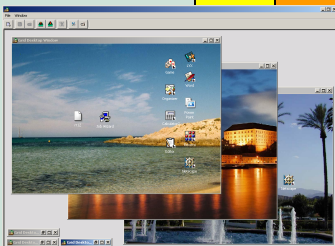


PSNC

Application Portal

Grid Middleware

Migrating Desktop



# Poznan Supercomputing and Networking Center

## Crossgrid Graphical User Interfaces

---

### **Portal (CrossGrid Application Portal):**

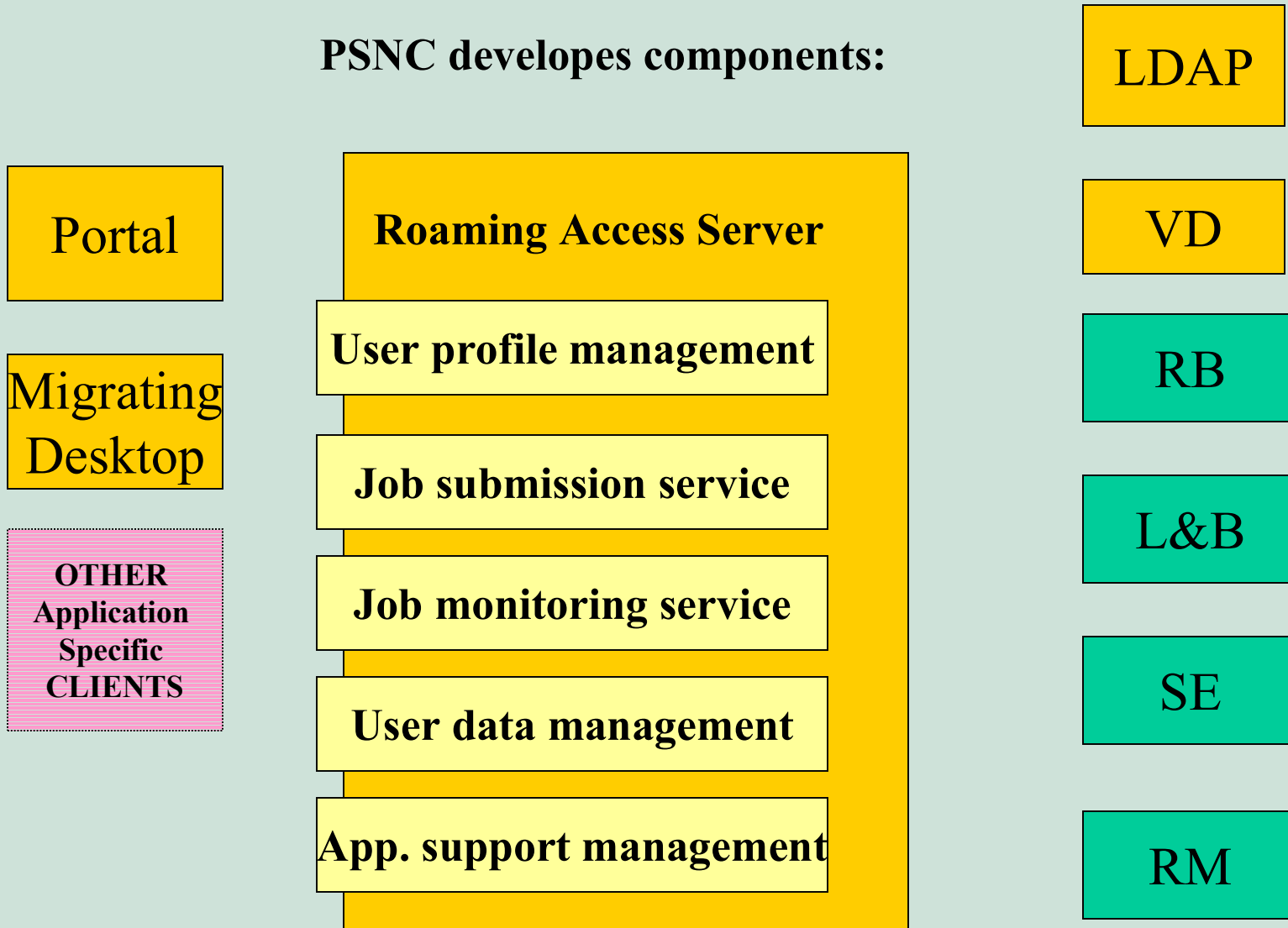
- ❖ Specific application oriented GUI
- ❖ Only basic GUI functionality (html,php)
- ❖ Usage: system without java eg. internet cafe, airport
- ❖ Thin client

### **Migrating desktop:**

- ❖ More sophisticated user friendly Java based GUI
- ❖ Whole environment for grid user (CrossGrid user)
- ❖ Possibility of working with many grids at once
- ❖ Integration of many crossgrid tools
- ❖ Local and grid application support
- ❖ Local and grid file management

# Poznan Supercomputing and Networking Center

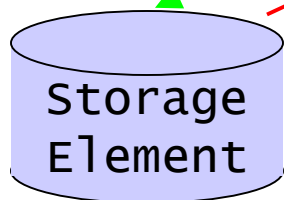
**PSNC developes components:**



# Poznan Supercomputing and Networking Center

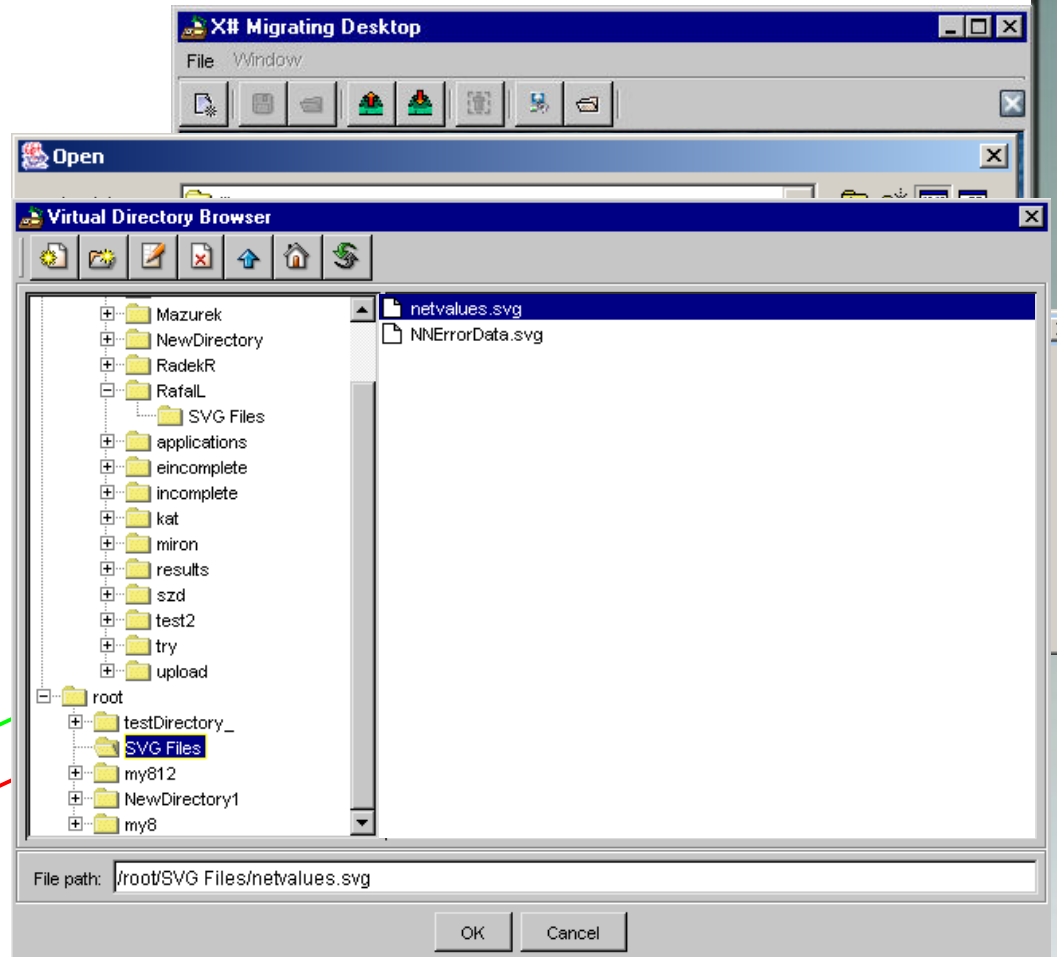
Virtual  
Directory

Roaming Access  
Server



Gftp put

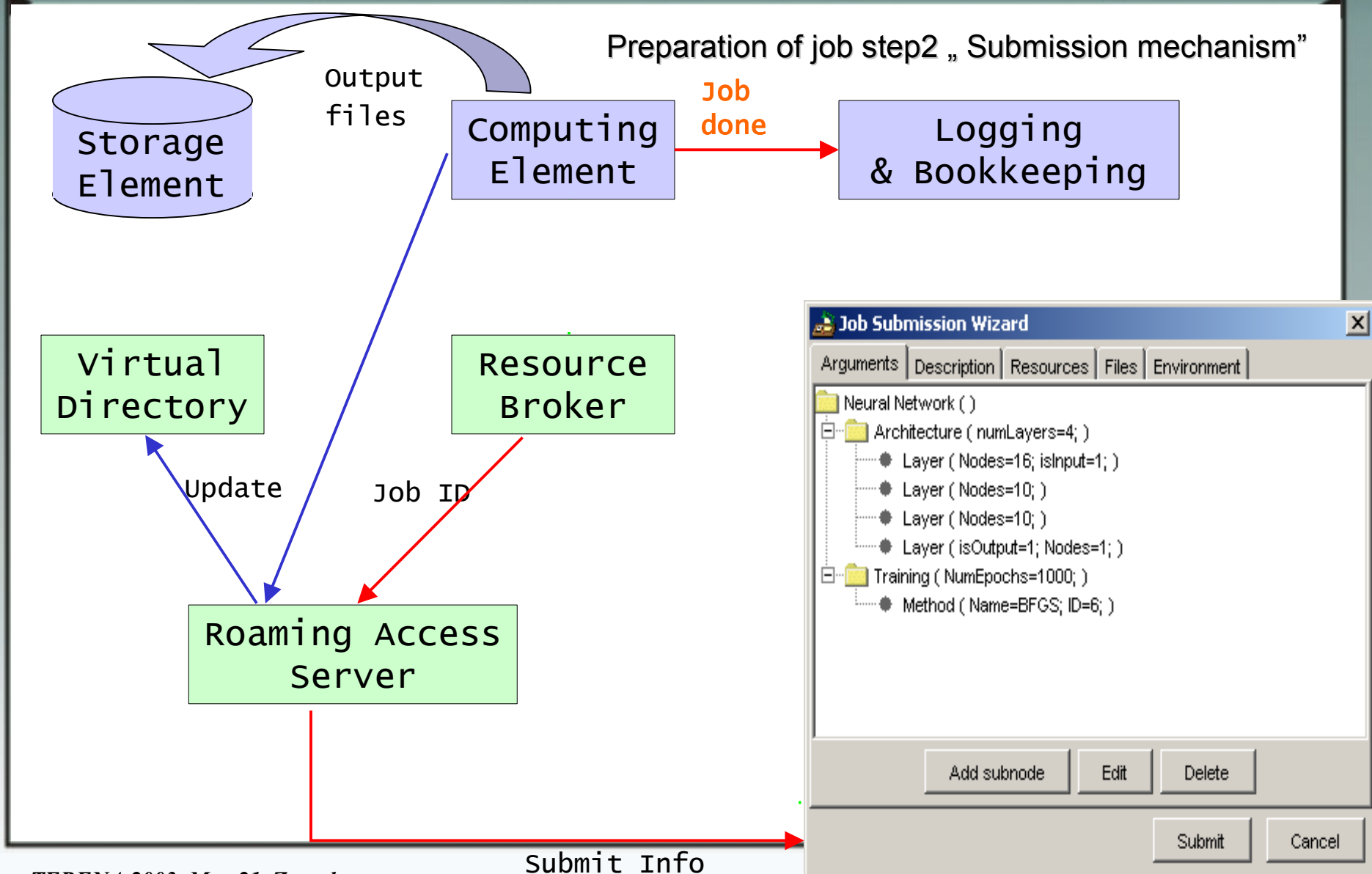
Upload Ack



Preparation of job step1 „File transfer – upload”

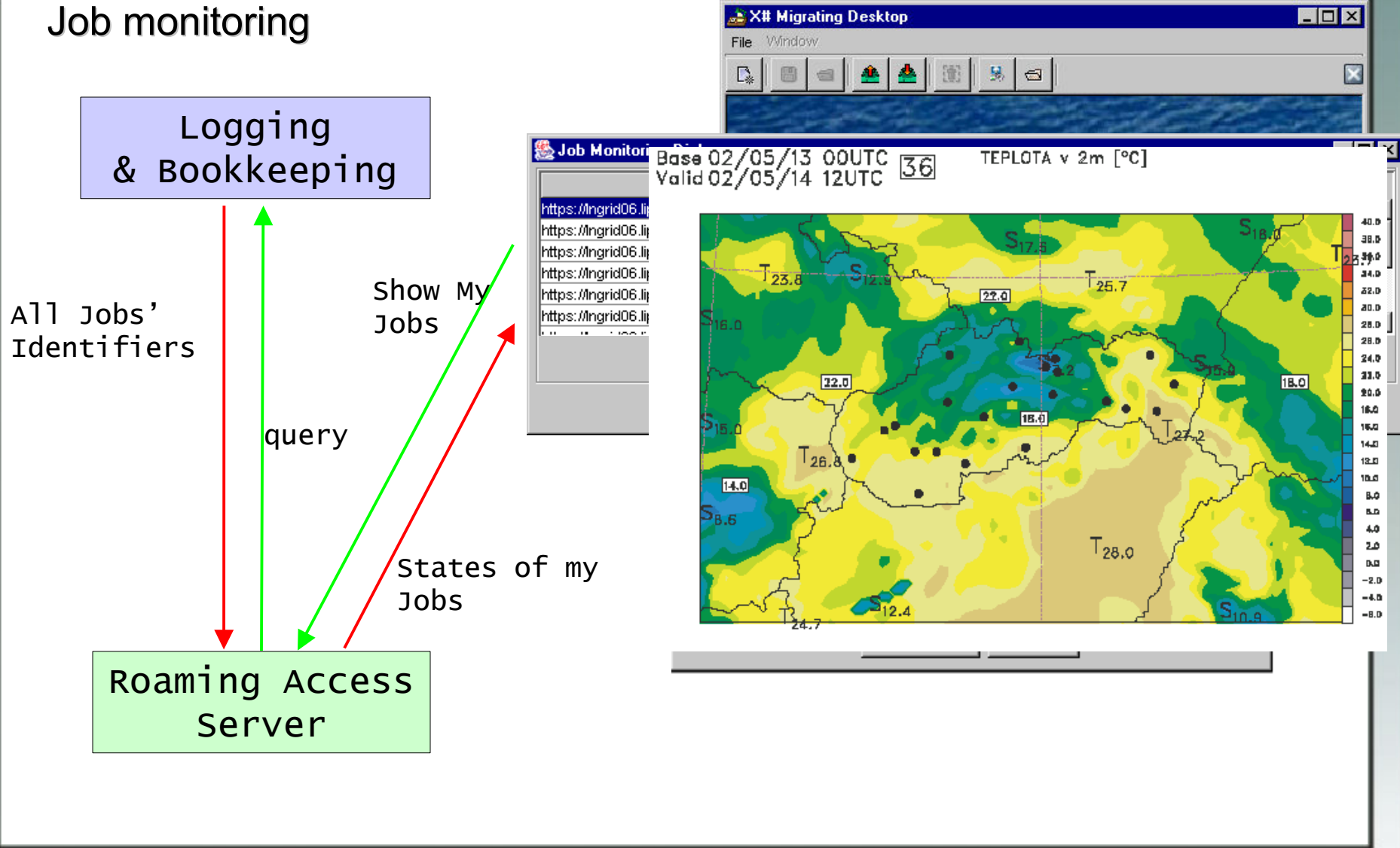
# Poznan Supercomputing and Networking Center

Preparation of job step2 „ Submission mechanism”



# Poznan Supercomputing and Networking Center

## Job monitoring



# Poznan Supercomputing and Networking Center

## Summary...

- We offer the new service for open network environment.
- It allows the restoring the user environment on every java enabled workstation.
- Support for grid applications.
- The project is co-funded by EU: IST-2001-32243

The logo for the CrossGrid project, featuring the word "crossgrid" in a stylized, lowercase font. The letters are white with a red outline, and the "o" and "s" are connected. The "g" and "r" are also connected. The "i" and "d" are separate. The logo is set against a light green background.

# Poznan Supercomputing and Networking Center

Thank you